

Ultra Clean Systems™

Torus 1100 Installation Guide

The Torus 1100 toroid isolation transformer is for use with the Model 1100. For facilities with low limits on current leakage, the twenty-pound Torus 1100 will reduce leakage current to below 100 μA (.1 mA). The toroid design decreases electromagnetic interference (EMI) to adjacent circuits or devices. The Torus 1100 provides a seamless connection between the facility power source and the Model 1100, is easy to install, and does not require additional wiring.

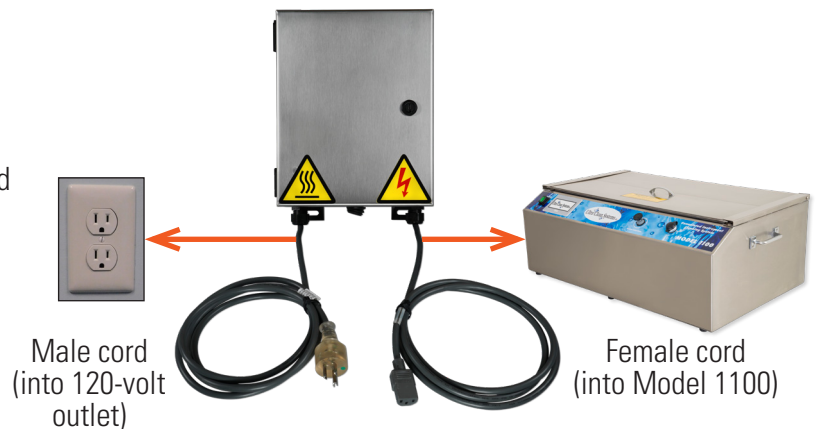
Equipment and Supplies Needed for Installation

Table Mount (Recommended)	Cement Wall Mount	Drywall Mount
(4) 10-32 \times 3/4" screws	(4) 10-14 \times 1/4" screws	(2) Toggle bolt anchors (per local building code)
---	(4) Plain lead shields or (4) Nylon expansion pipe wall plugs	(2) Drywall screws (per local building codes)
(4) #10 flat washers	(4) #10 flat washers	Flat washers (if needed)
(4) #10 lock washers	(4) #10 lock washers	Lock washers (if needed)
(4) #10 stainless steel nuts	---	---
Drill	Drill	Drill
Adjustable wrench	---	---
Phillips screwdriver	Phillips screwdriver	Phillips screwdriver



Installation

The Torus 1100 must be installed on a sturdy surface, to ensure that it is secure. If possible, placing it on a shelf is the best option. If a shelf is not available, the recommended place of installation is on the side of a sturdy cart or table (stainless steel or solid wood), such as the Ultra Clean Systems storage cart. The other option is mounting it on a wall near the Model 1100.



Shelf Placement

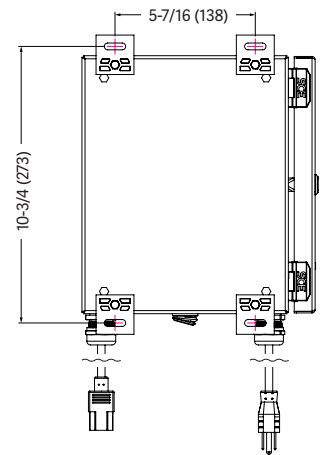
- Place the Torus 1100 on a stable shelf near the Model 1100.
Note: Be sure to choose a location where it cannot fall or be jostled. May cause injury to staff and damage to the product if it falls.
- Plug the female cord (located to the right of power switch) into the Model 1100.
- Plug the male cord (located to the left of power switch) into a nearby 120-volt power outlet.
Refer to the following page for cart/table and cement wall installation.

Warning: This product must be fully disconnected from the power source to prevent electrical shock.

Installation (continued)

Cart/Table Mount

- Position the Torus 1100 on the side of a sturdy cart or table (stainless steel or solid wood) near the Model 1100.
- Mark the four slotted areas on the surface of the cart/table, to indicate where the holes should be drilled.
Each slotted area has a 1/8" vertical radius and 13/16" horizontal radius.
- Temporarily set it on the cart/table. Using the appropriate drill bit size for the hardware, drill a hole into the center of each marked slotted area.
- Position the Torus 1100 over the drilled holes.
- Using a 10-32×3/4" screw and #10 flat washer, install in one of the drilled holes, from the front of the cart/table surface. Use a #10 lock washer and #10 stainless steel nut to secure to the back of the cart/table. Repeat for the other three holes.
- Verify that the Torus 1100 is installed securely.
- Plug the female cord (located to the right of power switch) into the Model 1100.
- Plug the male cord (located to the left of power switch) into a nearby power outlet.



Dimensions (Back View)

Note: Verify with the facility biomed department that the Torus 1100 was installed properly and will not fall.



Installed Hardware
(View 1)



Installed Hardware
(View 2)

Cement Wall Mount

- Select a wall near the Model 1100 to mount the Torus 1100 to, near an available 120-volt power outlet. Position it on the wall.
- Mark the four slotted areas on the wall, to indicate where the holes should be drilled.
Each slotted area has a 1/8" vertical radius and 13/16" horizontal radius.
- Temporarily set it on a sturdy surface nearby. Using the appropriate drill bit size for the hardware, drill a hole into the center of each marked slotted area. Insert a plain lead shield or nylon expansion pipe wall plug in each drilled hole.
- Position the Torus 1100 over the drilled holes.
- Using a 10-14×1 1/4" screw, #10 flat washer, and #10 lock washer, install in one of the drilled holes. Repeat with the remaining three holes.
- Verify that the Torus 1100 is installed securely.
- Plug the female cord (located to the right of power switch) into the Model 1100.
- Plug the male cord (located to the left of power switch) into 120-volt power outlet.
Refer to the following page for drywall installation.

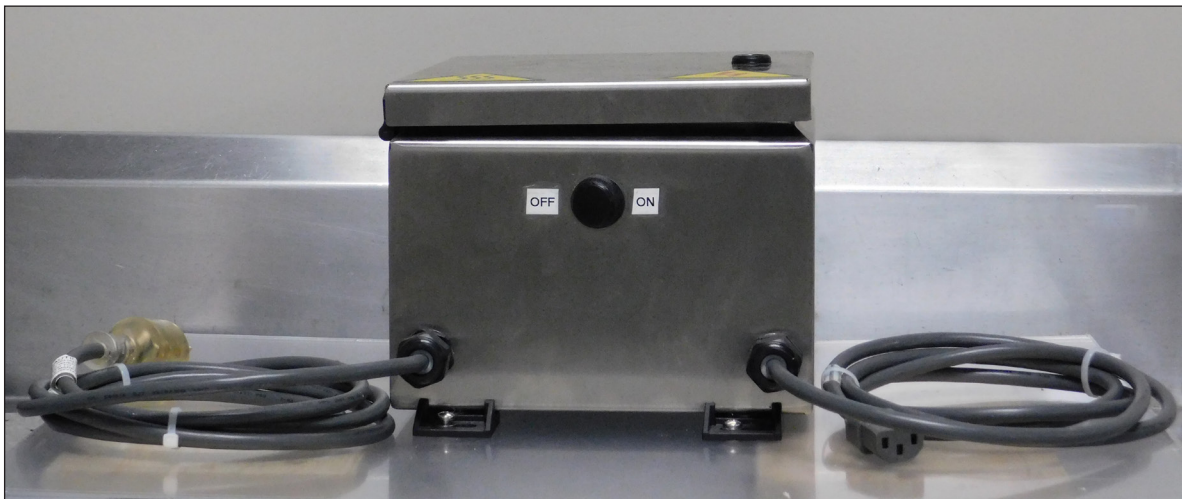
Note: Verify with the facility biomed department that the Torus 1100 was installed properly and will not fall.

Installation (continued)

Drywall Mount

- Select a wall near the Model 1100 to mount the Torus 1100 to, near an available 120-volt power outlet. Using a stud finder device or cell phone app, locate the center of a vertical stud to mount it to.
- Determine where on the stud to drill the holes, and position the Torus 1100 on the wall.
Note: Two of the holes need to be drilled into the center of the stud.
- Mark the four slotted areas on the wall, to indicate where the holes should be drilled.
Each slotted area has a 1/8" vertical radius and 13/16" horizontal radius.
- Temporarily set it on a sturdy surface nearby. Using the appropriate drill bit size for the hardware, drill a hole into the center of each marked slotted area.
- Position the Torus 1100 over the drilled holes.
- Using a drywall screw per local building codes (and flat washer and/or lock washer if needed), install in the top hole previously drilled into the stud. Repeat with the bottom hole previously drilled into the stud.
Note: Refer to the local building codes to determine which hardware to use, based on whether the stud is wood or aluminum.
- Using a toggle bolt anchor per local building codes (and flat washer and/or lock washer if needed), install in the top hole previously drilled into the drywall. Repeat with the bottom hole previously drilled into the drywall.
- Verify that the Torus 1100 is installed securely.
- Plug the female cord (located to the right of power switch) into the Model 1100.
- Plug the male cord (located to the left of power switch) into a nearby power outlet.

Note: Verify with the facility biomed department that the product was installed properly and will not fall.



Copyright 2019 Ultra Clean Systems, Inc. • All rights reserved.

Ultra Clean Systems, Inc. • 110 Douglas Road East • Oldsmar, FL 34677

Info@UltraCleanSystems.com

P: 877-935-6624

F: 813-925-1044

www.UltraCleanSystems.com

Ultra Clean Systems, Inc.